



SOUTHERN MARYLAND SAILING ASSOCIATION 2026 KEELBOAT PROGRAM RACE CIRCULAR

Sailing Instructions (SI) Amendment #1 (30 April 2026 – 12:05)

Pg 26:

Vice Commodore's Cup

DATE: May 9 **FEE:** none **ENTRY DUE:** 1700 May 7, 2026

OVERVIEW: This race will be run as a pursuit-style (reverse-start racing with your handicap determining your start time, slower boats start earlier.) This is intended as a fun warm-up for this summer's The Patuxent Pursuit regatta.

ELIGIBILITY: This race is open to keelboats/cruisers (PHRF) and dinghies (Portsmouth). **Registration is required (regardless of whether you have already registered for the Keelboat or Smallboat Season), in order to facilitate assigning participants their designated starting time.** No fee.

RACE AREA: SMSA Patuxent River Race Area.

STARTING AREA: Vicinity SMSA "S"

CHECKING IN: See General SI Paragraph 10.

CLASSES: PHRF Spinnaker, PHRF Non-Spinnaker, and Portsmouth.

RADIO: Boats should monitor VHF 72 for courtesy communications from the Race Committee.

SCHEDULE: Slowest boat will start at 1100. Each boat will have an assigned start time based on her PHRF handicap. This time is computed so that she is given her time allowance for the race at the start. Slower boats start before faster boats. Note that all classes will start in a single, merged sequence but will be scored separately.

Specific start times will be published on the electronic Notice Board for this race as an additional SI Amendment. [2026 Vice Commodores Cup Event Page](#) (or [smsa.com- Keelboat Page](#))

Official time is GPS time to the nearest second. (Your cell phone may also have GPS time to the second easily available in its CLOCK app. Please check this time against your GPS before using it.)

STARTING LINE: Between the RC boat yellow flag and SMSA S. SMSA S will bear approximately 040°M from the RC boat.

Each boat is responsible for starting at its assigned time.

A boat may use her engine for propulsion up to 4 minutes before HER ASSIGNED start.

Boats that have not started must stay clear of, and not interfere with, boats that have started and boats that will start ahead of them.

[DP] It is suggested that prior to their start, on the prestart side of the starting line, boats order themselves as closely as reasonably possible by their start times. Boats that start earlier should be closer to the line and should be allowed easy passage. Boats that start later should stay further from the line.

If a boat is on course side prior to her assigned starting time, she shall return to the pre-start side of the line and start no earlier than her assigned time. This replaces RRS#29.1.

FINISH LINE: Between the RC boat yellow flag and a dropmark in the location of Wednesday Night Starting Area (WNSA) (38 18.92'N, 076 26.74'W).

COURSE: The Race Committee will choose between a Long Course (1) and Short Course (2) on the morning of the race based upon predicted wind speeds. The RC will display the selected course using either an "1" or "2" course placard.

The Starting Times / Sequence are different for each course ("1" or "2"). Boats shall use the assigned starting time for their boat for the displayed course.

A complete description of the marks is in SI 9.6/9.7. All government marks shall be passed on the channel side unless the mark is a mark of the course that is being rounded.

Course Long (1):

- START between SMSA S and the RC Boat as described above.
- SMSA M to port
- SMSA L to port
- SMSA V to port
- SMSA T to starboard
- SMSA B (PR#3) to Starboard
- SMSA K to starboard
- Finish at Race Committee Boat as described above.

The official distance is 9.92 nm.

Course Short (2):

- START between SMSA S and the RC Boat as described above.
- SMSA M to port
- SMSA L to port
- SMSA V to starboard
- SMSA K to Starboard
- Finish at Race Committee Boat as described above.

The official distance is 5.42 nm.

STARTING SIGNALS: There will be no official sounds, flags or signals. Each boat is responsible for starting at its assigned time. This replaces RRS #26.

TIME LIMIT: The Time Limit will be 15:30. Any boat finishing 1 hour after the first boat in class will be scored Time Limit Expired (TLE) which will be equal to the number for finishers plus two. This changes RRS 35 and A5.2, A5.3(modified), and A10.

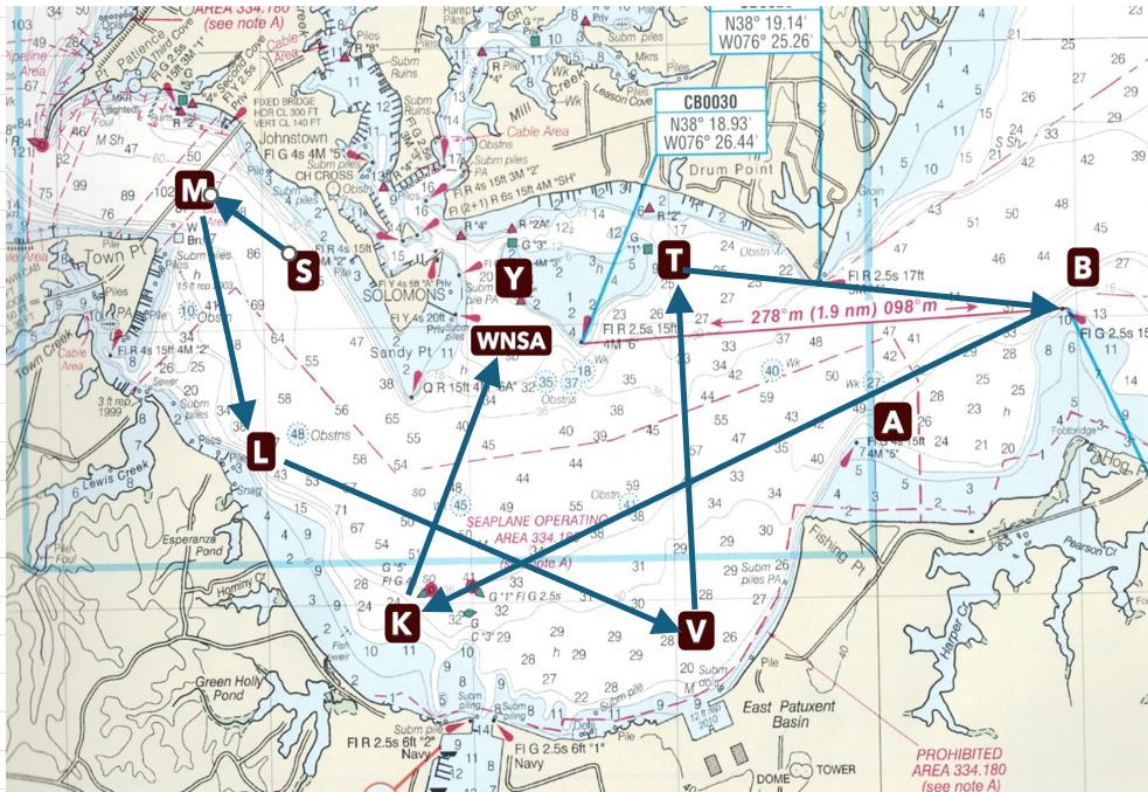
SCORING: The Low Point Scoring System of Appendix A of the Racing Rules of Sailing will apply. The Time on Distance handicap for PHRF Circular Random Courses will be used. Portsmouth Class boats will be scored using PHRF rating calculated from their local Portsmouth rating.

PROTESTS: Protests shall be lodged with the RC within one hour of either the finishing time of the last boat of the race or the RC boat's docking time, whichever is later. Protests will be heard at a later time.

AWARDS & # BOATS STARTING: 1st/2; 2nd/5; 3rd/7.

Awards will be presented at the annual SMSA banquet. Results will be posted on www.smsa.com.

Long Course "1"



Short Course "2"

